



CONTROS
Systems & Solutions GmbH



HydroC™ MELDS

Mobile Early Leak Detection System

HydroC™ MELDS is an unique underwater system for detecting oil or gas leakages at a very early stage. It combines three independent components for direct and indirect as well as comprehensive hydrocarbon investigations.

ADVANTAGES

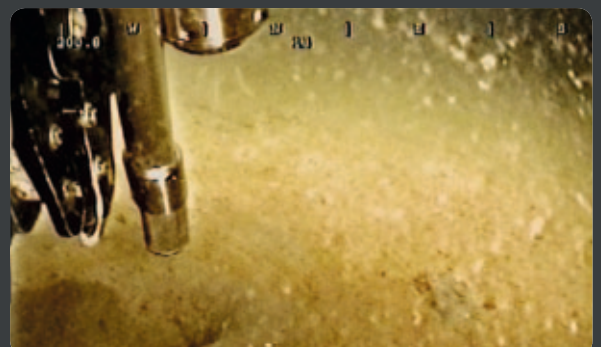
- Detects even non-visible hydrocarbon leaks
- proven arctic version available
- Detect oil and gas leaks with a completely integrated system designed for easy ROV/ AUV integration
- 24h emergency support hotline
- No damage caused due to high concentrations of either gas or oil in water
- One day on-site training course inclusive

HOW IT WORKS

- Quick sensors detecting smallest possible leaks
- HydroC™ CH₄ sensor as backbone of MELDS system
- Combination of direct and indirect methods

Qualification of leaks (what?)

- Selective method to eliminate false alarms
- Direct methods for direct detection of leaking medium



MARKET LEADER IN DISSOLVED GAS MEASUREMENTS. MADE IN GERMANY.

MELDS

HydroC™ MELDS



CONTROS
Systems & Solutions GmbH

FAST FACTS

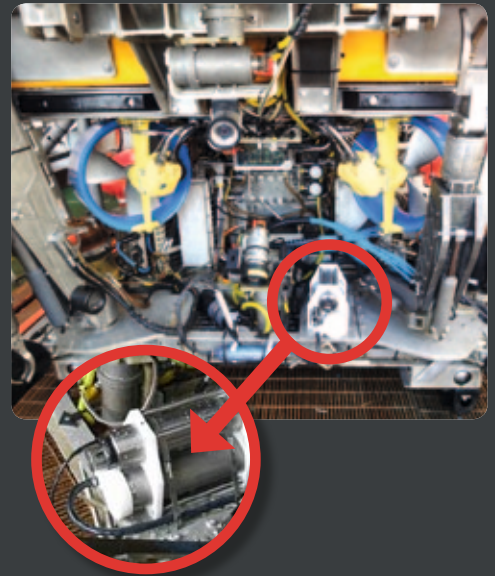
APPLICATION

an intelligent sensor suite in order to provide precise results in a timely and cost-effective fashion.

MELDS comprises a subsea methane sniffer (dissolved methane and combustible gases) complete with flowhead, a PAH fluorometer, CTD, pump and T-handle with suction tube rated to 3000 m. The system offers a mobile leak detection system for detecting oil and gas leakages in pipelines and other oil and gas industry structures. MELDS has been designed to be easy to integrate and easy to use with.

The MELDS consists of:

- The HydroC methane sniffer the backbone of the MELDS system detecting dissolved hydrocarbons.
- A polycyclic aromatic hydrocarbon (PAH) sensor based on the principle of fluorescence for the detection of any oil in water in real time.
- A conductivity, temperature and pressure (CTD) probe for the measurement and identification of anomalies in the environmental baseline.
- CTD



MEASURING RANGE

CH₄: 0.1 – 50 µmol/L ; PAH: 0 – 500 µg/L;
Temp: -4 to +40 °C ± 0.1 °C ; Cond: 0 – 60 mS/cm
± 0.001 mS/cm ; Press: 0 – 4000 dbar ± 1 dbar

OPERATIONAL DEPTH

max. 3000 m

TEMPERATURE RANGE

+ 3 to 30 °C/Arctic and other ranges available

SIZE/WEIGHT

Standard configuration 520 x 170 x 200 mm³/
12.3 kg in air/9.2 in sea water

POWER SUPPLY

12 / 24 VDC @ 18W (max. 36 W on start-up)

CONNECTOR

IMPULSE or SUBCONN® MCBH8-M-TI 8-pin

DIGITAL OUTPUT

EIA-232, Data format ASCII NMEA-0183

DATA OUTPUT

19200, 8 data bits, no parity, 1 stop bit.
No flow control

SOFTWARE

DETECT™ Software Suite for graphical data visualization:

- Graphical display and interface to ROV Operator Display for easy location of leaks
- Supports standard oceanographic sensors for full coverage of any kind of anomalies
- Automated detection of any leaks (oil/gas) through graphical display and simplified status flags instead of complex multi graph display:
 - Allows for easy location of anomalies even through trained technicians
 - Raw data can be displayed as graphs for further qualification and quantification of anomaly and reporting

OPTIONS

- Designed for easy ROV and AUV integration
- Modular system with the ability to add any third party sensor such as CO₂, pH, etc.
- Optional flow-through version with submersible pump for manipulator directed measurements.
- Wide variety of sensors as optional add-ons.
- Software with export option for integration into existing data acquisition systems.

CONTACT US

CONTROS Systems & Solutions GmbH
Wischhofstr. 1-3 | Bld. 2 | 24148 Kiel | Germany
p: 49 [0] 4 31 26 09 59 00 | f: 49 [0] 4 31 26 09 59 01
e: contact@contros.eu | www.contros.eu