

A Firm Commitment to the Water Resources Industry.

Professional Customer Service and Support

SonTek is proud to have the most experienced and helpful customer support/sales staff in the industry. Each employee comes to SonTek with a background full of practical application experience enabling them to make the best instrument recommendations, quickly answer on-site applications specific questions, and provide a combination of theoretical and practical training tailored to your needs.



With water conservation demands growing every year, accurate and reliable flow measurements have become critical to water management decisions. Now you can enjoy the benefits of high-precision flow measurements in less time than ever while keeping it all affordable.

Easy Installation and Maintenance

SonTek engineers are smart enough to know that advanced technology is useless if it can not be practically installed and maintained. Attention to details such as rugged construction, accessible wet-mateable connectors and mounting points are built-in to every instrument. Each system comes standard with Windows-based or PDA application software to program and manage your vital data. SonTek's acoustic Doppler instruments never require calibration, and accuracy is unaffected by biological growth.



Whether your water is hundreds of feet deep or just one inch deep and whether it is moving fast or slow, SonTek has a solution.

World Class Product Development and Manufacturing

New product development is part of our culture, and we take great strides to meet the changing needs of the water resources community. An international R&D team with expertise in microelectronics, software, acoustics, civil and ocean engineering complement our advanced production facility at our San Diego, CA headquarters. Part of the YSI family of companies, SonTek is firmly committed to the future health of the planet.



SonTek The World Leader For Water Velocity Measurement.

GLOBAL HEADQUARTERS

SonTek/YSI Inc.
6837 Nancy Ridge Drive, Suite A
San Diego, CA 92121
Tel: (1) 858-546-8327
Fax: (1) 858-546-8150
inquiry@sontek.com
www.sontek.com

Northeastern USA:

Endeco/YSI
13 Atlantis Drive
Marion, Massachusetts 02738 USA
Tel: (800) 363-3269
Fax: (1) 508-748-2543

European Support Centre

SonTek/YSI
South Down House,
Station Road, Petersfield,
Hampshire, GU32 3ET
United Kingdom
Tel: +(44) 1730-710-616
Fax: +(44) 1730-710-617

China

YSI (Qingdao) Limited
6/F, 141 Yanan Road
Qingdao, P.R. China
Tel: +(86) 0532-389-6648
Fax: +(86) 0532-389-6647

Hong Kong

YSI (Hong Kong) Limited
18/F, Regency Centre
39 Wong Chuk Hang Road, Hong Kong
Tel: +(852) 2891-8154
Fax: +(852) 2834-0034

Japan

YSI/Nanotech Inc.
Kaizuka 1-15-4
Kawasak-Ku
Kawasaki City 210-0014
Japan
Tel: +(81) 44 222 0009
Fax: +(81) 44 222 1102

- OCEANS AND COASTS
- WATER RESOURCES
- PORTS, HARBORS, AND WATERWAYS
- HYDRAULICS LABORATORIES
- UNDERWATER NAVIGATION

SonTek Acoustic Doppler Instrumentation for Flow and Level Measurement.



NATURAL RIVERS & STREAMS



HYDRO POWER



IRRIGATION



MARSHES & ESTUARIES



From the world's mightiest rivers to the small stream in your backyard, SonTek has solutions to the most critical challenges facing the water resources community.

THE APPLICATIONS

Years of on-the-job, water resources field experience, together with a world-class research and development team are at the core of how hydrological instruments are developed at SonTek. These influences have led to the most significant technological developments for the water-resources industry in the past decade. Armed with new SonTek tools that just a few years ago were unthinkable, hydrologists and technicians can now measure water velocity and flow with extreme precision and efficiency that far surpasses conventional techniques.

SONTEK SOLUTIONS

Instant Discharge Measurements in Rivers and Canals



With the SonTek RiverSurveyor system, measuring flows in open channels could never be easier nor more precise. Simply transect the channel from one bank to the other and RiverSurveyor outputs a complete channel cross-section, 3-D velocity profile, and calculated discharge.

RiverSurveyor data can be used for developing discharge ratings, CFD modeling, or bathymetric surveying.

RIVERSURVEYOR

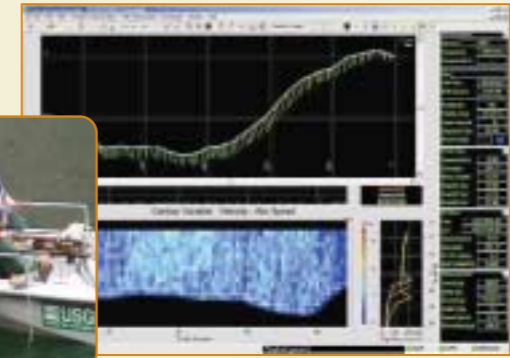
Built on SonTek's proven ADP® (Acoustic Doppler Profiler) product line, the RiverSurveyor has become a leading package for reliable and accurate discharge measurements from moving boats. Available in several configurations and frequencies, SonTek has models for rivers as large as the Amazon, or small streams barely a few feet deep. With an all-purpose operating mode, users can be assured of consistent & robust performance in all stages of stream flow. An easy-to-use software interface has you up and running in just a few minutes.

FEATURES

- Windows software package
- Bottom tracking
- Real time discharge calculation
- DGPS Interface

CONFIGURATIONS

- Standard ADP system
- Mini ADP system
- RiverCAT tethered catamaran



RiverCAT

The RiverCAT integrated system provides all the functionality of RiverSurveyor in a single compact package. This package consists of a Mini-ADP transducer, an electronics package containing built-in battery power, radio telemetry and GPS interface, with your choice of either rugged aluminium hulls or low profile fiberglass pontoons.



Continuous Flow and Level Monitoring



The SonTek Argonaut® product line caters to a variety of applications such as open channel discharge, water level monitoring, and velocity indexing. With built-in recorders, Argonauts are ready for either autonomous deployments or easy interfacing to existing arrays via RS-232/422, SDI-12, or current loop output.

World renown for their robustness, ease of use and practicality, Argonauts are easy to install, set up and maintain.

ARGONAUT-SL

Easily installed on a riverbank, bridge abutment or other vertical structure, the Argonaut-SL (Side-Looking) is an advanced Doppler sonar for precise 2-D water velocity measurements in a horizontal layer. Flow disturbances caused by the mounting structure can be eliminated by beginning the measurement several meters away from the instrument. The Argonaut-SL never requires calibration, and velocity accuracy is not affected by biological growth. Options for water level measurement, water quality, telemetry, and flow calculations extend the capability of the Argonaut-SL to a wide variety of applications.

APPLICATIONS

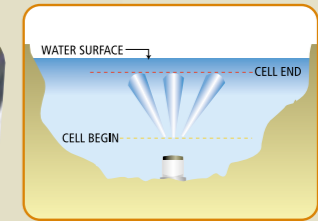
- River discharge monitoring
- Irrigation canals
- Pollution monitoring (with optional YSI Sonde)
- Flood alert systems
- Velocity indexing
- Water supply



The Argonaut-SL can be mounted on a single bank of an open channel and profile 2-D water velocity in a horizontal sampling volume extending across the channel cross-section.

Argonaut-XR

Designed specifically for looking up from the bottom of a river or channel, the Argonaut-XR (eXtended Range) offers all the features of the Argonaut-SL (including current profiling) in a 3-D version. The integrated pressure sensor allows a bottom-mounted XR to simultaneously measure level while automatically adjusting the position of the sampling volume with changing tide or river stage.



Because the Argonaut-XR vertically integrates water velocity from the bottom all the way to the surface, it is an ideal tool for sites where bi-directional flows are present.

Flow Measurements in Shallow Streams



Exclusive ADV® technology from SonTek enables fast, accurate, & reliable stream flow measurements for both hydrologic research or operational stream gauging. Though able to work in all depths and flow conditions, the ADV's shallow water and low-flow performance is unparalleled.

Options for measuring water velocity in three dimensions makes them great tools for flow-mapping, fish screen measurements or many water treatment applications.

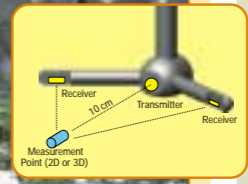
FLOWTRACKER HandHeld ADV

Putting laboratory-precision flow measurements at your fingertips, the FlowTracker is a great tool for both everyday stream gauging or for specialized hydrological applications. Packaging ADV technology with an integral keypad/display, the FlowTracker supports both USGS and ISO algorithms for discharge computation in shallow streams and rivers.

Unparalleled low-flow and shallow water performance takes the FlowTracker into applications previously unthinkable with conventional current meters.

FEATURES

- Excellent performance is both fast (up to 4.5 m/s) and slow-moving (down to 0.001 m/s) water
- Easily attaches to wading rods
- Built-in temperature sensor
- Never needs calibration



Argonaut-ADV

The Argonaut-ADV uses the same technology as the FlowTracker for continuous 2-D or 3-D single-point water velocity measurement in a compact, rugged field package. With a built-in recorder, the Argonaut-ADV is ideal for short-term field deployments or permanent installations.

FEATURES

- Low flows (down to 0.001 m/s)
- Shallow water (down to 0.02 m)
- Rechargeable battery (optional)
- RS-232/422, or SDI-12 output
- YSI water quality sensor (optional)



Lake Deployment of the Argonaut-ADV