



# EcoNet® Data Management Services

An integral part of YSI's complete data acquisition system

EcoNet is a comprehensive, web-enabled data management system that significantly reduces the time required to collect, organize, and analyze your water quality and hydrometric data. Access and view data faster and easier than ever before with YSI EcoNet Data Management Services (DMS).

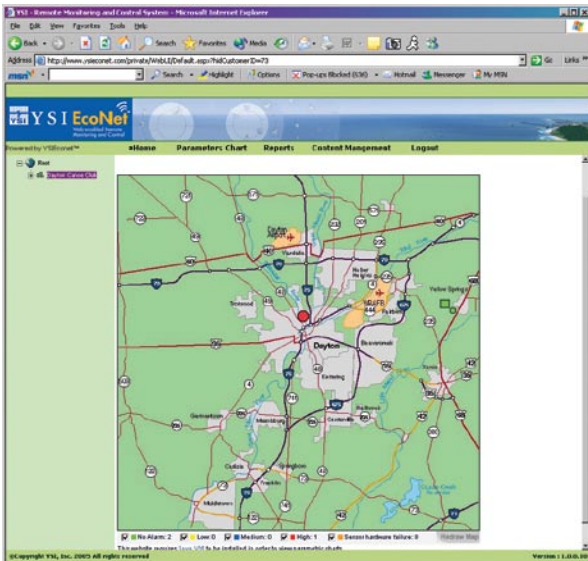
- Easily compile data from previously incompatible devices
- Easily access data via any web-enabled device
- Affordable levels of data subscription services

EcoNet DMS consists of two primary sub-services:

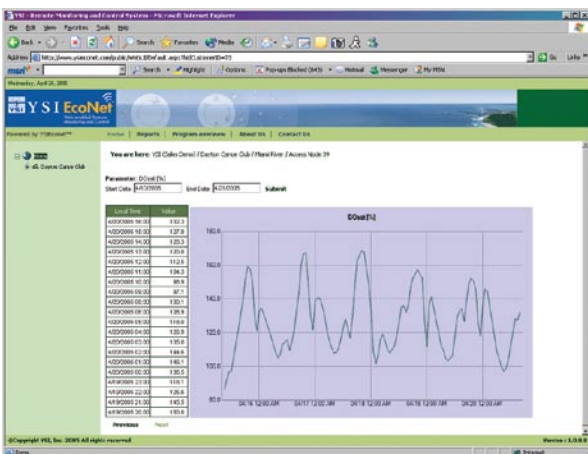
## Web Site Hosting Service

YSI's web-hosting solutions take away the hassle and the complexity of making your data available and accessible on your own customizable web site.

- **Security:** Data is stored and "hosted" in a secured, state-of-the-art Data Center (see EcoNet Data Center spec sheet for details)
- **Flexibility:** Data can be downloaded manually or automatically in a variety of formats including .csv, HTML, XML
- **Simplicity:** Control of remote "nodes" and "sensors" as well as access to data via any web browser or web-enabled device
- **Visualization:** Data can be displayed in a variety of ways including graphs, tables, or a dashboard of "gauges". Individual site locations are presented in a GIS-like map view format
- **Control:** Configure and control "nodes" and "sensors" from the comfort of your office using any web browser
- **Alarms:** Email messages, alerts, and notifications are generated and sent automatically to any email account. You can also trigger relay-controlled outputs, change sampling interval, or alter the frequency of data transfer based on user-defined "event-driven" parameters
- **Reports:** generate and email standard or user-defined reports for daily, weekly, monthly, or statistical ranges



EcoNet gives you access to data from remote sites via any web-enabled device, including PDAs and cell phones. Users can customize their data displays, including graphical and tabular reports (below).



## Data Communications Service

YSI offers a comprehensive selection of wired and/or wireless Data Communications Services for bringing your data in from the field and onto your desktop. In addition, YSI will take care of all the setup and logistics of working with cellular or satellite service providers.

- **Cellular:** Digital and analog cellular communications using GSM, GPRS, CDMA, or AMPS technology
- **Satellite:** For locations where cellular signals are not available we offer OrbComm satellite communications
- **Radio:** When nodes and sensors are within "line-of-site" distance from a control point, we offer 900Mhz and 2.4Ghz radio communication
- **Dial-up:** Dial-up telephone to access your data is still an option
- **LAN, TCP/IP:** If your sites have access to a direct LAN (computer Ethernet) connection, connect nodes and sensors directly and access via any web-enabled device





To order, or for more information, contact YSI Integrated Systems & Services

+1 508 748 0366  
800 363 3269 (US)  
systems@ysi.com  
www.ysi.com

YSI Environmental  
Yellow Springs, OH  
+1 937 767 7241  
Fax +1 937 767 9353  
environmental@ysi.com

SonTek/YSI  
+1 858 546 8327  
Fax +1 858 546 8150  
inquiry@sontek.com

YSI Gulf Coast  
+1 225 753 2650  
Fax +1 225 753 8669  
environmental@ysi.com

YSI Hydrodata (UK)  
+44 1462 673 581  
Fax +44 1462 673 582  
europe@ysi.com

YSI Middle East (Bahrain)  
+973 1753 6222  
Fax +973 1753 6333  
halsalem@ysi.com

YSI (Hong Kong) Limited  
+852 2891 8154  
Fax +852 2834 0034  
hongkong@ysi.com

YSI (China) Limited  
+86 10 5203 9675  
Fax +86 10 5203 9679  
beijing@ysi-china.com

YSI Nanotech (Japan)  
+81 44 222 0009  
Fax +81 44 221 1102  
nanotech@ysi.com

ISO 9001

ISO 14001

(Yellow Springs facility)

YSI EcoNet and Who's Minding the Planet? are registered trademarks of YSI Incorporated.

©2007 YSI Incorporated  
Printed in USA 0207 E76



YSI incorporated  
Who's Minding  
the Planet?®

## Data Management Services

Data and system command and control are made available through four tiers of Data Management Services (DMS), tailored to suit your information access needs:

**Basic DMS** is a simple but powerful service which provides access to data 24/7. Information is sampled at a fixed 30-minute interval and transmitted at a fixed one-hour interval.

**Basic Plus (+) DMS** provides the features of Basic DMS PLUS gives you control of sensor sample intervals and data transmission intervals as well as providing automated reporting capability OR alarm/alerts.

**Standard DMS** provides the features of Basic+ DMS PLUS three additional features: A) access to a "public" web site for general data viewing, B) the ability to create and manage multiple password-protected users, and C) access to both data reports AND alarms and alerts setup.

**Professional DMS** provides the features of Standard DMS PLUS user-customizable web site content management and advanced features and control.

	Basic	Basic+	Standard	Pro
<b>Data Management Services:</b>				
Hardened internet data center	●	●	●	●
Firewall and virus protection	●	●	●	●
Redundant power and connectivity	●	●	●	●
Oracle and SQL server database	●	●	●	●
Telecom service provider support	●	●	●	●
<b>Data Display/Access:</b>				
Public web site access with URL			●	●
View data (tabular or graphical)	●	●	●	●
View historical data	●	●	●	●
Private secure access with password	●	●	●	●
Data display and analysis	●	●	●	●
Download data files (current/historical)	●	●	●	●
<b>Site/Sensor Configuration:</b>				
Fixed sensor sample interval = 30 min	●	●		
Fixed data transmission interval = 1 hour	●	●		
User-selectable sensor/site sample interval			●	●
User-selectable transmission interval			●	●
Change sensor set-up			●	●
<b>Data Reports:</b>				
Fixed time reports (daily, weekly, monthly)		●	●	●
User-defined reports		●	●	●
<b>Alarm and Alert Set-up:</b>				
Create/edit local actions (control)		◀	●	●
Create/edit alarm settings and thresholds		◀	●	●
Initiate notification on alarm		◀	●	●
Event triggers (alarm outputs, sampling rate, transmission rate)		◀	●	●
<b>Web Site Content Management:</b>				
Default YSI web template	●			
Create and manage content				●
Configure data display				●
Add/edit maps and graphics				●
Create and manage users and roles				●
<b>Data Sharing and Transfer:</b>				
FTP data transfer				▲
Real-time transfer on sample interval				▲
Scheduled data transfer (hourly, daily, weekly, and monthly)				▲

Data Management Services is one of three components of the YSI EcoNet data acquisition system. Data Management Services works in conjunction with field hardware (EcoNet Data & Access Nodes) and instruments as well as the secure EcoNet Data Center.

◀ Optional alarms OR reporting  
▲ Contact factory for details